

KI-N1528R

1.5U Ultra compact Rackmount / Desktop chassis Depth 11" only



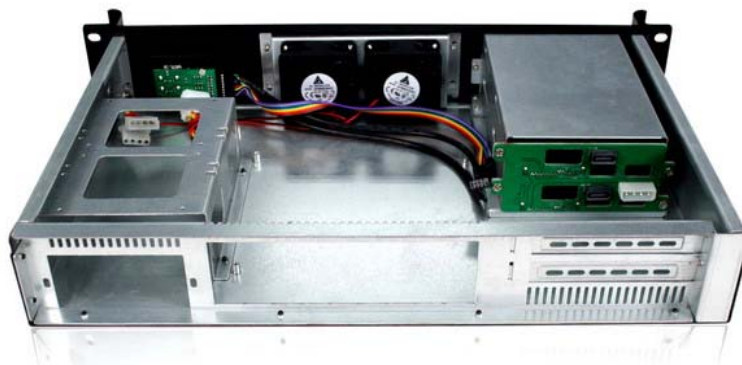
Introduction

The KI-N1528R is the most compact 1.5U chassis support Mini-ITX system

It support 2*3.5" hotswap + 2*2.5"(fix) HDD,and 2*Expansion slot,standard I/O plate

Features and Benefits

- ▶ Compact size to save space,Depth=280mm
- ▶ With 2*3.5" hotswap + 2*2.5"(fix) HDD
- ▶ With 2*Expansion slot
- ▶ Support standart I/O plate



Specification

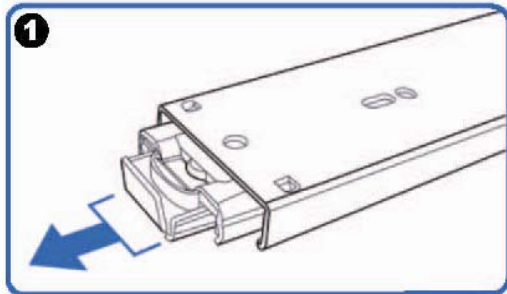
Dimension (W*H*D)	19" x 1.5U x 11"/ 482 x 68 x 28 (mm)
Material Construction	Heavy-duty & Rugged steel 1.2mm + Industrial Aluminum front panel
M/B Size	17cm x 17cm (Atom Mini-ITX)
I/O	Standard I/O with M/B
Expansion	1slot PCI-E 16x riser card w/robbion cable PCIE100-16-RC (Option) 1slot 32bit riser card w/robbion cable PCI100-32(Option) 2slot 32bit riser card w/robbion cable PCI200-32(Option) 1slot PCI-E 16x riser card w/robbion cable PCIE100-16-RC (Option)
Control & Indicator	1*Power switch +1* Reset switch 1 x LED(power) +1 x LED(HDD) 2*2.0 USB
Cooling Fans	2x 6cm silent Fan
DriveBay	2 x 3.5" hotswap HDD + 2 x 2.5" HDD(internal)
Power Supply	High efficiency 1U P/S 250w~400w(option)
Sliding rail	18" ball bearing sliding rail (option)
CPU cooler	1U CPU cooler (option)
Color	Black / Red / Bule / Green / Silver
Operation Temperature	Up to 50C (122°F)
Operation Humidity (Non-condensing)	Up to 90%
Packing Measurement CBF / CBM	1.2 / 0.033
Packing N.W / G.W	5.5KGS /6.5KGS

Option: Three-Sections Heavy-Duty Solid Ball-Bearing Sliding Rails

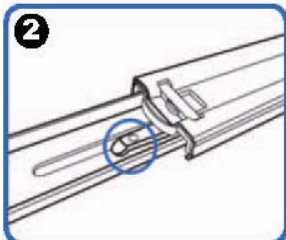
Model: RB18

Features: Universal Design to match almost all chassis on market, Heavy-Duty Slide Ball Bearing
Built-in stop-latch, lock chassis in extended position for easy access ,
Simply pressing on the plastic levers on each side and slide your case back into the cabinet

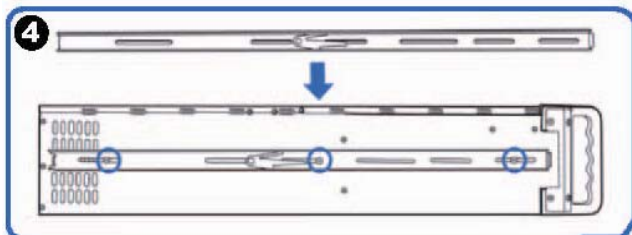
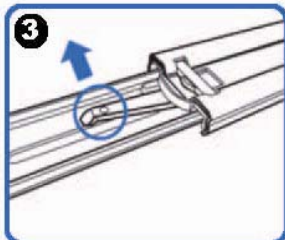
Warranty: 1 Year



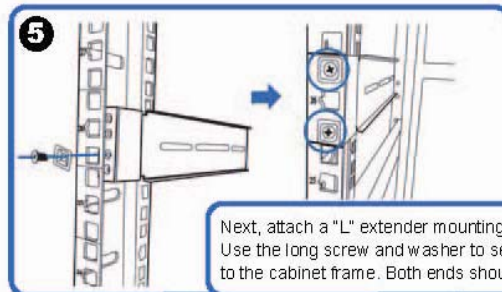
(Pull the center slide all the way out until it reaches the end)



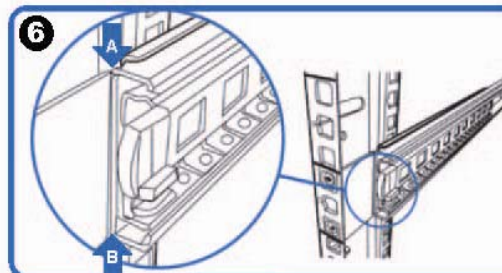
You will see a locking clip at the end point of the center slide. Push it down and unlock the center slide.



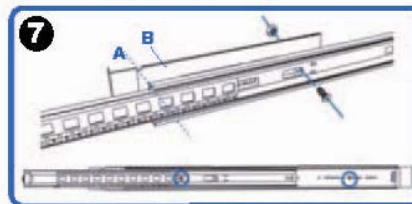
Now put the center slide right next to the rackmount chassis. You should be able to find screw holes on both sides of chassis. Holes are used for mounting the center slide. Later the center slide will be use for attaching the sliding rail.



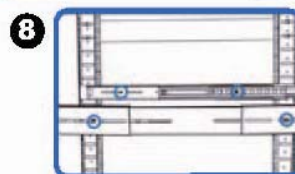
Next, attach a "L" extender mounting bracket on to the cabinet. Use the long screw and washer to secure the "L" extender bracket or to the cabinet frame. Both ends should have the extender bracket.



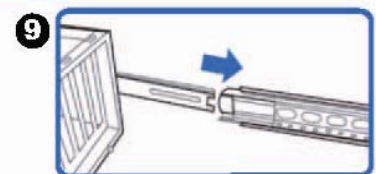
Align front outer rail to the indent of L bracket between Point A & B.



Secure outer rail to L bracket with crews and nuts.



Repeat previous steps to secure sliding rails on both sides.



Reattach inner rail back to center rail.