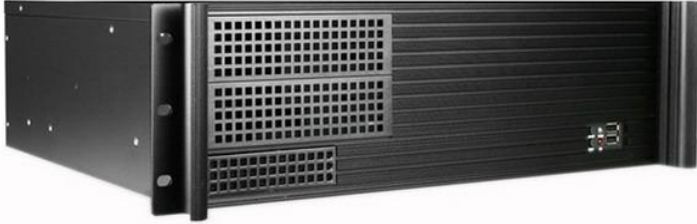


# Ultra compact Series

## KI-N323

3U Ultra compact Rackmount / Desktop chassis KI-N323M Depth=390mm



### Introduction

CasePro KI-N323 is a ultra compact chassis with 15" depth ,2x CDROM space for wide range application

Support ATX PS2 powersupply for regular server

### Features and Benefits

- High density chassis support Micro ATX Motherboard and PS2 ATX Powersupply
- With unique industrial aluminum front door (hidden vent holes)



### Specification

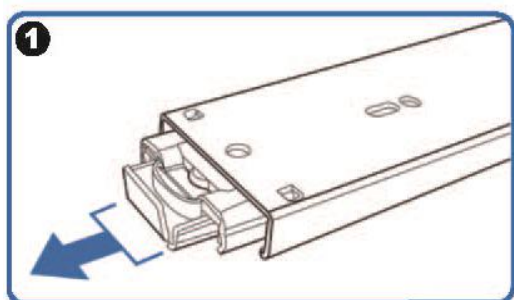
Dimension (W*H*D)	19"*5.25"*15.35"/ 482*133.3*390 (mm)
Material Construction	Heavy-duty & Rugged steel 1.0mm
M/B Size	9.6 x 9.6 (microATX, mini-ITX)
Expansion	4 slots full height rear side ATX
Control & Indicator	1*Power switch +1* Reset switch 1 x LED(power) +2 x LED(HDD) 2*2.0 USB
Cooling Fans	2 x 8025 fan in take +2 x 6025 fan at rear(option)
DriveBay	3.5" Drivesx1+3.5" Drive (internal)x 4+5.25" Drivesx 2
Power Supply	PS-2 ATX powersupply
Sliding rail	18" ball bearing sliding rail (option)
Color	Black / Red / Bule / Green / Silver
Operation Temperature	Up to 50C (122°F)
Operation Humidity (Non-condensing)	Up to 90%
Packing Measurement CBF / CBM	2.5/ 0.07
Packing N.W / G.W	6.0KGS / 7.5KGS

## Option: Three-Sections Heavy-Duty Solid Ball-Bearing Sliding Rails

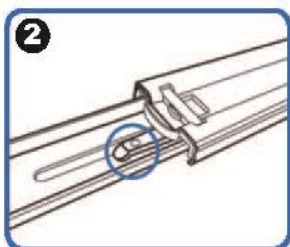
Model: RB18

Features: Universal Design to match almost all chassis on market, Heavy-Duty Slide Ball Bearing  
Built-in stop-latch, lock chassis in extended position for easy access ,  
Simply pressing on the plastic levers on each side and slide your case back into the cabinet

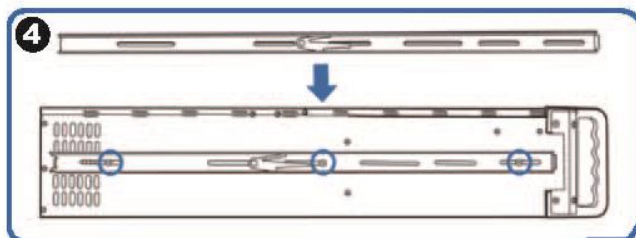
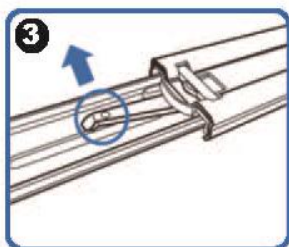
Warranty: 1 Year



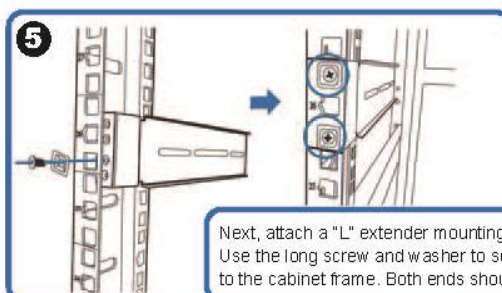
(Pull the center slide all the way out until it reaches the end)



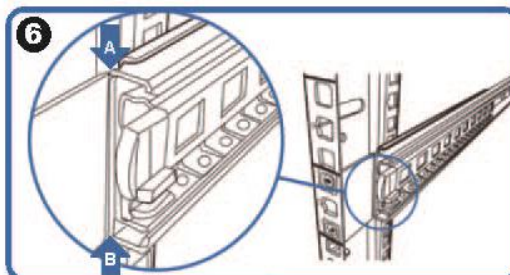
You will see a locking clip at the end point of the center slide. Push it down and unlock the center slide.



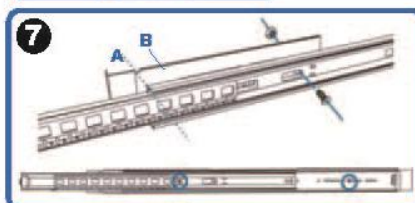
Now put the center slide right next to the rackmount chassis. You should be able to find screw holes on both sides of chassis. Holes are used for mounting the center slide. Later the center slide will be use for attaching the sliding rail.



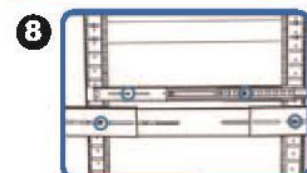
Next, attach a "L" extender mounting bracket on to the cabinet. Use the long screw and washer to secure the "L" extender bracket or to the cabinet frame. Both ends should have the extender bracket.



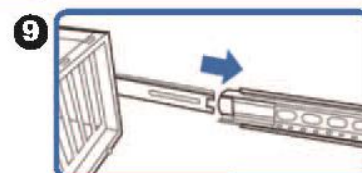
Align front outer rail to the indent of L bracket between Point A & B.



Secure outer rail to L bracket with crews and nuts.



Repeat previous steps to secure sliding rails on both sides.



Reattach inner rail back to center rail.

