

KI-N402

4U Ultra Compact Server Rackmount Chassis

KI-N402 is a compact server chassis, Fit with standard ATX main board size performs the most efficient solution, depth=382mm, KI-N402 is simple design and easy assembly & maintenance with Front access



Features and Benefits

- Compact size to save space, Depth 15" (382mm)
- Support I/O front access
- Anti-Shock 2*5.25 + 6*3.5 drive bays
- Front access USB2.0*2 or USB3.0



Specification

Dimension (W*H*D)	19" x 7" x 15"/ 482 x 177 x 382mm
Material Construction	Heavy-duty High-end SGCC steel Thickness:1.0mm
M/B Size	ATX (12"x 9.6")
Expansion	7 slots rear side ATX or 14slot 1*Power switch +1* Reset switch
Control & Indicator	1 x LED (power) +1 x LED (HDD) 2*2.0 USB
Cooling Fans	1 x 12cm Fan +2 x 8cm
DriveBay	2 x 5.25" + 6 x 3.5" (internal)
Power Supply	Standard PS-2 ATX or PS-2 size Mini-Redundant Power supply 300w~550w
Sliding rail	18" ball bearing sliding rail (option)
Color	Black
Operation Temperature	Up to 50C (122°F)

Operation Humidity (Non-condensing) Up to 90%

Packing Measurement CBF / CBM 2.4 / 0.06

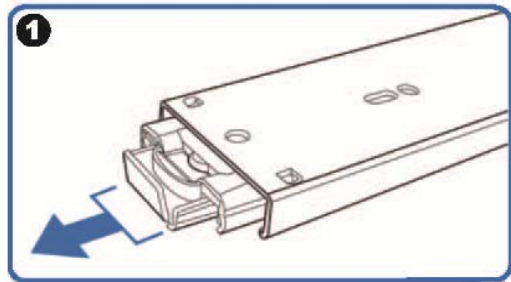
Packing N.W / G.W 7.2KGS / 8.5KGS

Option: Three-Sections Heavy-Duty Solid Ball-Bearing Sliding Rails

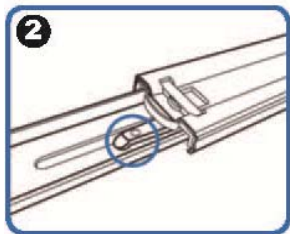
Model: RB18

Features: Universal Design to match almost all chassis on market, Heavy-Duty Slide Ball Bearing
Built-in stop-latch, lock chassis in extended position for easy access ,
Simply pressing on the plastic levers on each side and slide your case back into the cabinet

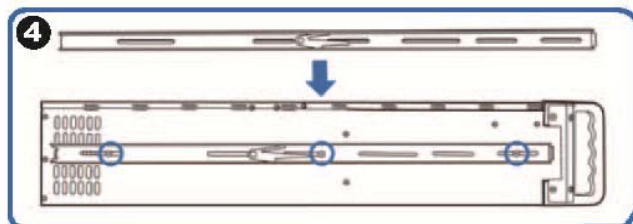
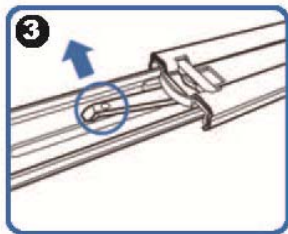
Warranty: 1 Year



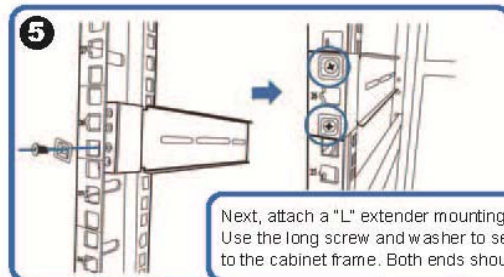
(Pull the center slide all the way out until it reaches the end)



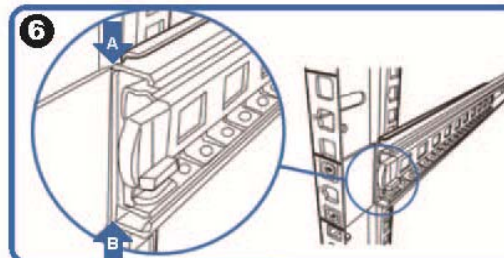
You will see a locking clip at the end point of the center slide. Push it down and unlock the center slide.



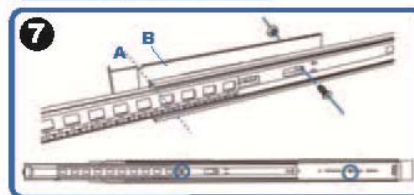
Now put the center slide right next to the rackmount chassis. You should be able to find screw holes on both sides of chassis. Holes are used for mounting the center slide. Later the center slide will be use for attaching the sliding rail.



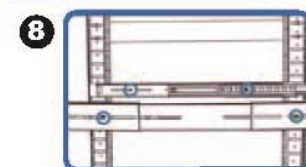
Next, attach a "L" extender mounting bracket on to the cabinet. Use the long screw and washer to secure the "L" extender bracket on to the cabinet frame. Both ends should have the extender bracket.



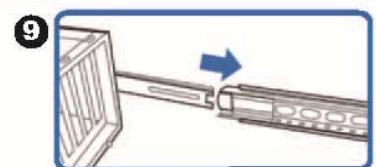
Align front outer rail to the indent of L bracket between Point A & B.



Secure outer rail to L bracket with crews and nuts.



Repeat previous steps to secure sliding rails on both sides.



Reattach inner rail back to center rail.

