

## KI-M550

### 1U Blade Mini-ITX dual system chassis KI-M550



#### Introduction

The KI-M550 is a 1U chassis with the Blade storage, Dual Atom Mini-ITX system

The KI-M550 has 4x 3.5" or 8\*2.5" hard drive bays

#### Features and Benefits

- Dual Blade Mini-ITX system
- 4\*3.5" or 8\*2.5" hard drive bays
- Universal I/O shield
- 8\*4cm cooling fans

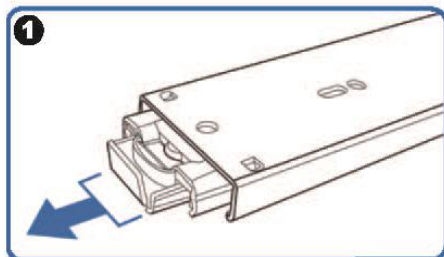
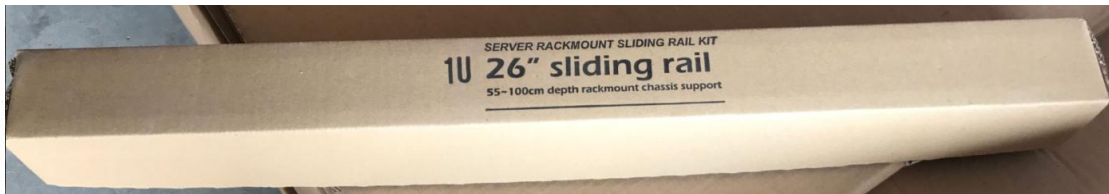


**1U twin mini-itx blade chassis**  
**4x3.5" HDD or 8x2.5" HDD**  
**8x40mm cooling fan**

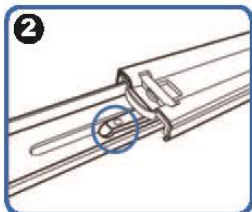
#### Specification

Dimension (W*H*D)	19"*1.75"*21.65"/ 482*44.5*550 (mm)
Material Construction	Heavy-duty and anti-rusty steel,thickness:1.2mm
M/B Size	Dual Mini-ITX 17"*17" 2*Power switch +2* Reset switch
Control & Indicator	2 x LED(power) +2 x LED(HDD) 2*2.0 USB
Cooling Fans	8 x 4cm silent Fan
DriveBay	4 x 3.5" or 8*2.5" (internal)
Power Supply	Dual High-efficiency 1U Flex P/S 200w (max 250w) (option)
Sliding rail	1U 26" ball bearing
Color	Black / Red / Bule / Green / Silver
Operation Temperature	Up to 50C (122°F)
Operation Humidity (Non-condensing)	Up to 90%
Packing Measurement CBF / CBM	1.7 / 0.053
Packing N.W / G.W	10.0KGS /12.0KGS

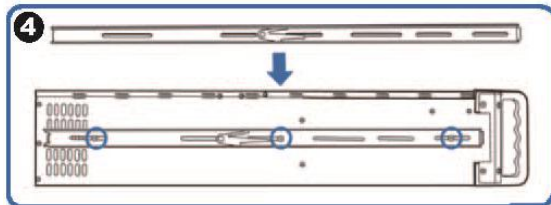
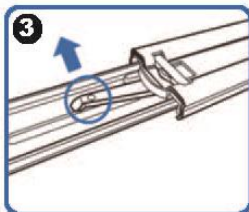
## Option: Three-Sections Heavy-Duty Solid Ball-Bearing Sliding Rails



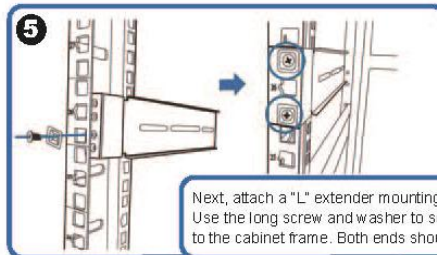
(Pull the center slide all the way out until it reaches the end)



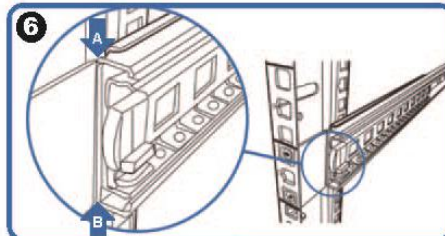
You will see a locking clip at the end point of the center slide. Push it down and unlock the center slide.



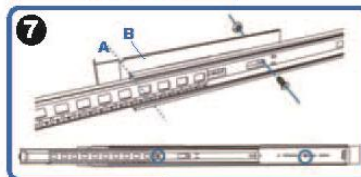
Now put the center slide right next to the rackmount chassis. You should be able to find screw holes on both sides of chassis. Holes are used for mounting the center slide. Later the center slide will be use for attaching the sliding rail.



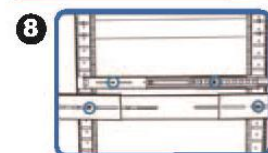
Next, attach a "L" extender mounting bracket on to the cabinet. Use the long screw and washer to secure the "L" extender bracket on to the cabinet frame. Both ends should have the extender bracket.



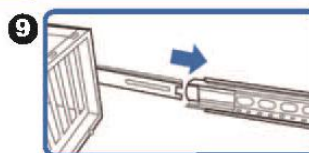
Align front outer rail to the indent of L bracket between Point A & B.



Secure outer rail to L bracket with crews and nuts.



Repeat previous steps to secure sliding rails on both sides.



Reattach inner rail back to center rail.