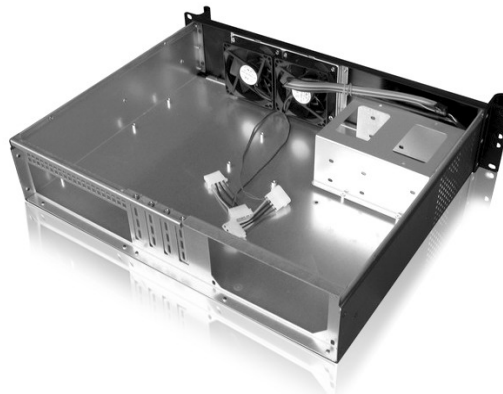


## KI-M235

2U Ultra compact Rackmount / Desktop chassis KI-M235 Depth=350mm



### Introduction

CasePro KI-M235 is a ultra compact chassis with 13.8" depth ,2x 3.5" space for wide range application  
Support ATX PS2 powersupply for regular server

### Features and Benefits

- Release handles change to desktop chassis
- High density chassis support Micro ATX Motherboard and PS2 ATX Powersupply
- With unique industrial aluminum front door (hidden vent holes)



### Specification

Dimension (W*H*D)	19"*3.5"*13.8" / 482*88.8*350 (mm)
Material Construction	Heavy-duty & Rugged steel 1.0mm, Stylish aluminum front panel
M/B Size	(Micro ATX) 9.6"*9.6"
Expansion	4 slots low profile add on card
Control & Indicator	1*Power switch +1* Reset switch
	1 x LED(power) +1 x LED(HDD) 2*2.0 USB
Cooling Fans	2 x 8025 fan in take
DriveBay	2 x 3.5"(Internal)
Power Supply	PS-2 ATX powersupply
Sliding rail	20" ball bearing sliding rail (option)
Color	Black / Red / Bule / Green / Silver
Operation Temperature	Up to 50C (122°F)
Operation Humidity (Non-condensing)	Up to 90%
Packing Measurement CBF / CBM	1.94/ 0.055
Packing N.W / G.W	5.0KGS / 6.5KGS