

Two aluminum door Series

KI-N4058

4U Stylish Rackmount server / DVR Chassis



Introduction

4U industrial rackmount chassis KI-N4058. It supports up to seven full-length full-height add-on cards. Total capacity up to 3 x 5.25" + 8 x 3.5" (internal) drives for high density data storage. 1*12cm+2*80mm fan provides excellent thermal cooling solution. Achieve ultimate uninterrupted operation with support redundant power supply or PS-2 Powersupply. KI-N4048 provides your server or cluster maximum flexibility and performance.

Features and Benefits

- ▶ Industrial chassis for 12" x 10.5" M/B or 14/15slot passive backplane
- ▶ 3 x 5.25" + 8 x 3.5" (internal)
- ▶ Aluminum Alloy front door, both are lockable, Air filter are Removable & Washable
- ▶ Front access USB 2.0 x 2
- ▶ Standard I/O shield
- ▶ Optional DVR rear panel
- ▶ Power and HDD LED



Specification

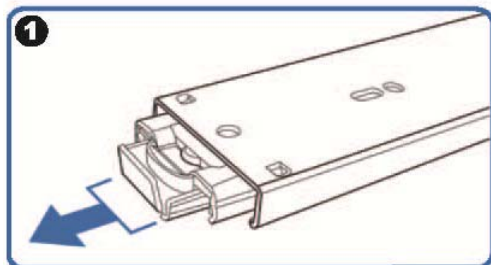
Dimension (W*H*D)	19" x 7" x 18.9" / 485 x 177 x 480mm
Material Construction	Heavy-duty and anti-rusty SECC steel T=1.2mm, Aluminum front door T=3.0mm
M/B Size	(ATX) 12" x 10.5" or 14/15slot passive backplane
Expansion	7 slots rear side full height or DVR rear panel
Control & Indicator	1*Power switch + 1* Reset switch 1 x LED (power) + 1 x LED (HDD) 1*2.0 USB

Cooling Fans	1*12cm Fan in front+2*6cm Fan(optional)
DriveBay	3 x 5.25" + 8 x 3.5" (internal)
Power Supply	Standard PS-2 ATX or PS-2 size Mini-Redundant Power supply 300w~550w
Sliding rail	20" ball bearing sliding rail (option)
Color	Black / Red / Bule / Green / Silver
Operation Temperature	Up to 50C (122°F)
Operation Humidity (Non-condensing)	Up to 90%
Packing Measurement CBF / CBM	2.7 / 0.076
Packing N.W / G.W	13.0KGS /15.0KGS

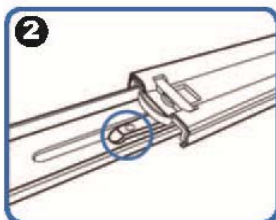
Option: Three-Sections Heavy-Duty Solid Ball-Bearing Sliding Rails

Model: RB26

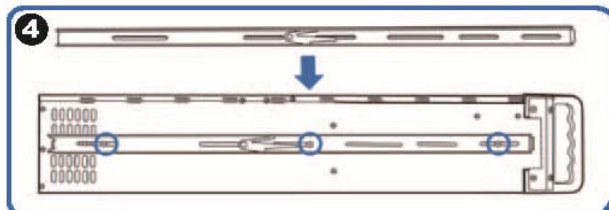
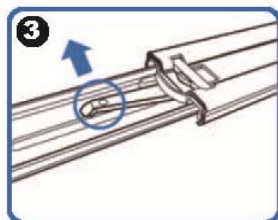
Features: Universal Design to match almost all chassis on market, Heavy-Duty Slide Ball Bearing
Built-in stop-latch, lock chassis in extended position for easy access ,
Simply pressing on the plastic levers on each side and slide your case back into the cabinet



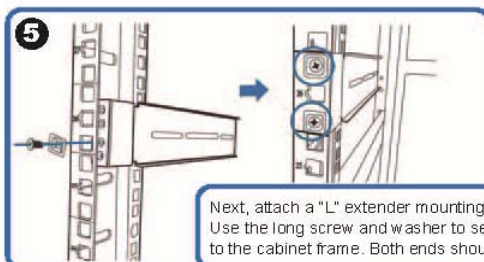
(Pull the center slide all the way out until it reaches the end)



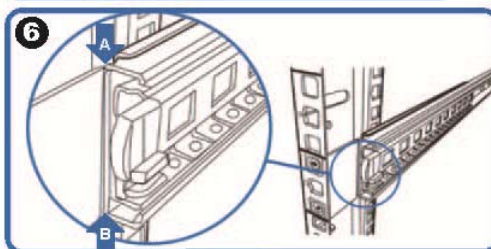
You will see a locking clip at the end point of the center slide. Push it down and unlock the center slide.



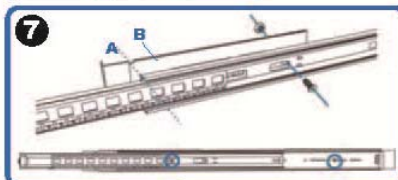
Now put the center slide right next to the rackmount chassis. You should be able to find screw holes on both sides of chassis. Holes are used for mounting the center slide. Later the center slide will be use for attaching the sliding rail.



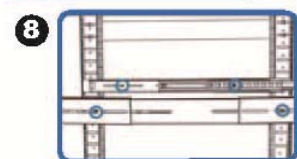
Next, attach a "L" extender mounting bracket on to the cabinet. Use the long screw and washer to secure the "L" extender bracket to the cabinet frame. Both ends should have the extender bracket.



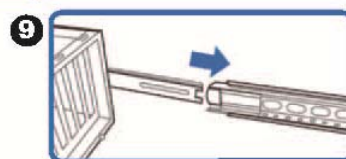
Align front outer rail to the indent of L bracket between Point A & B.



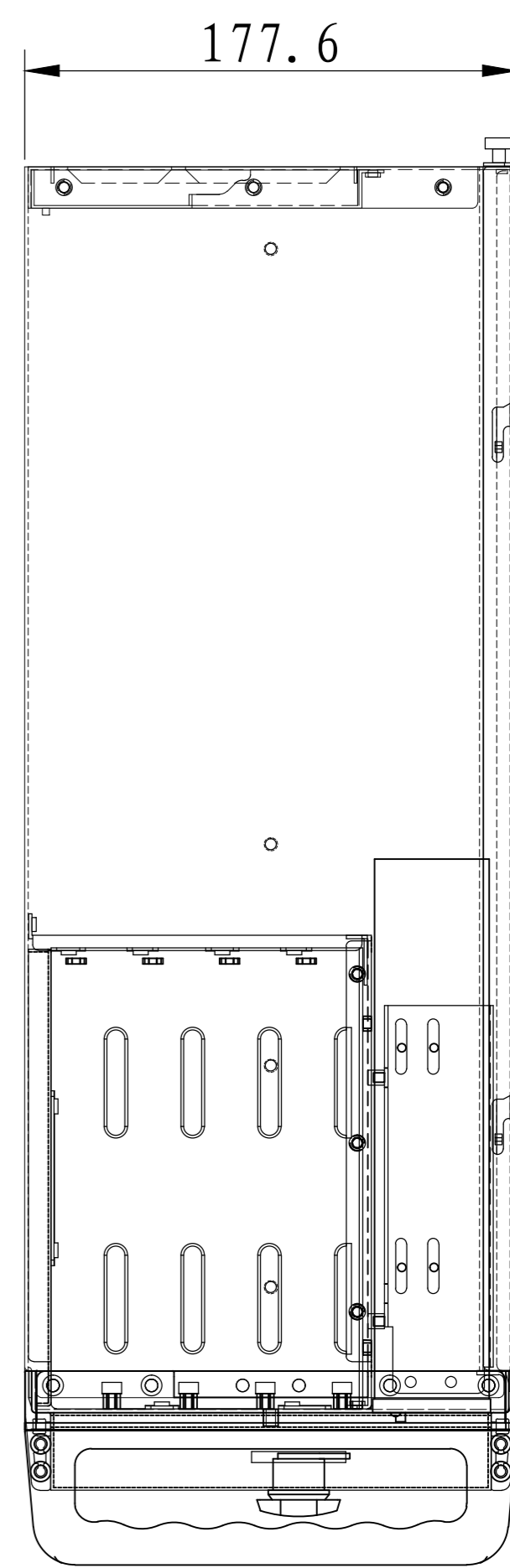
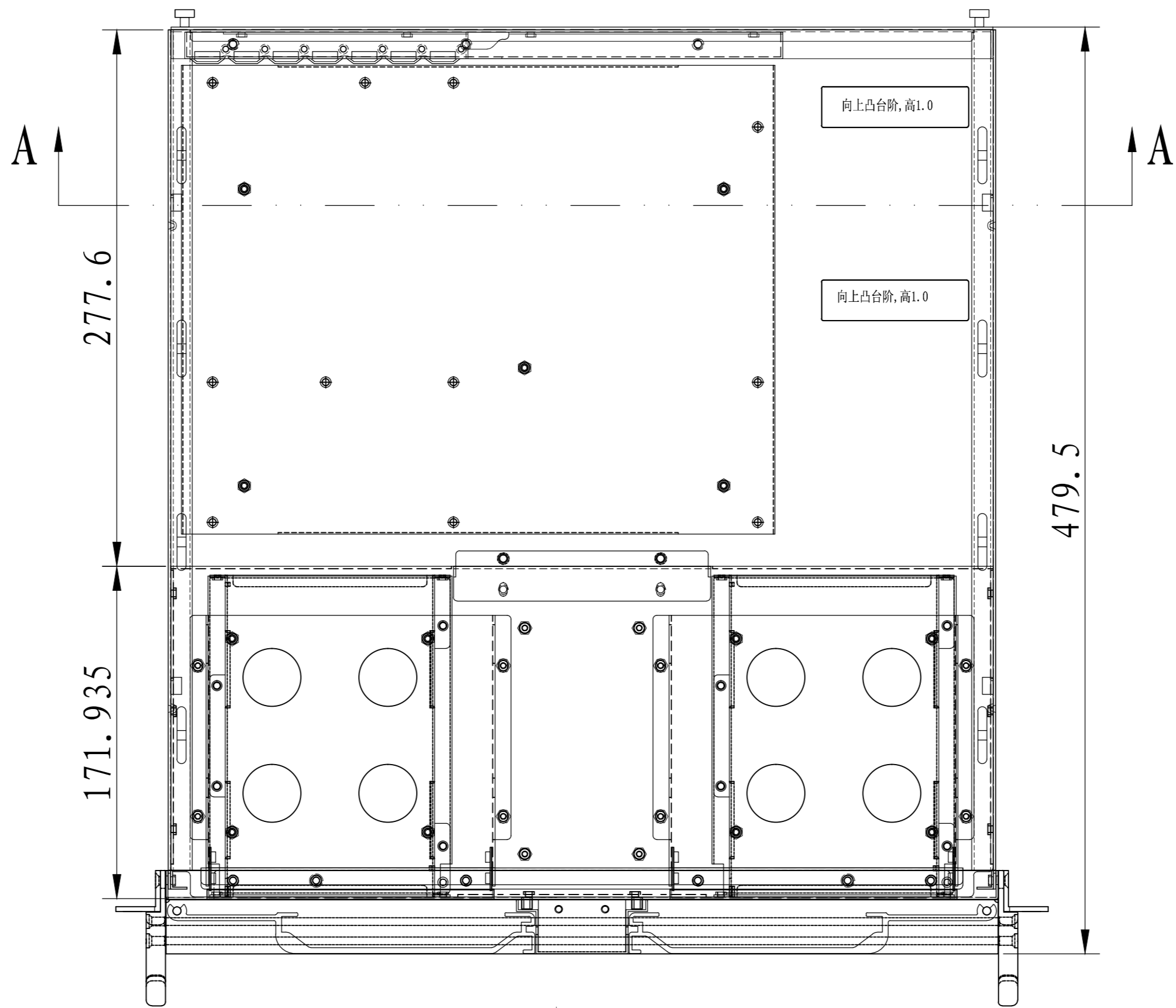
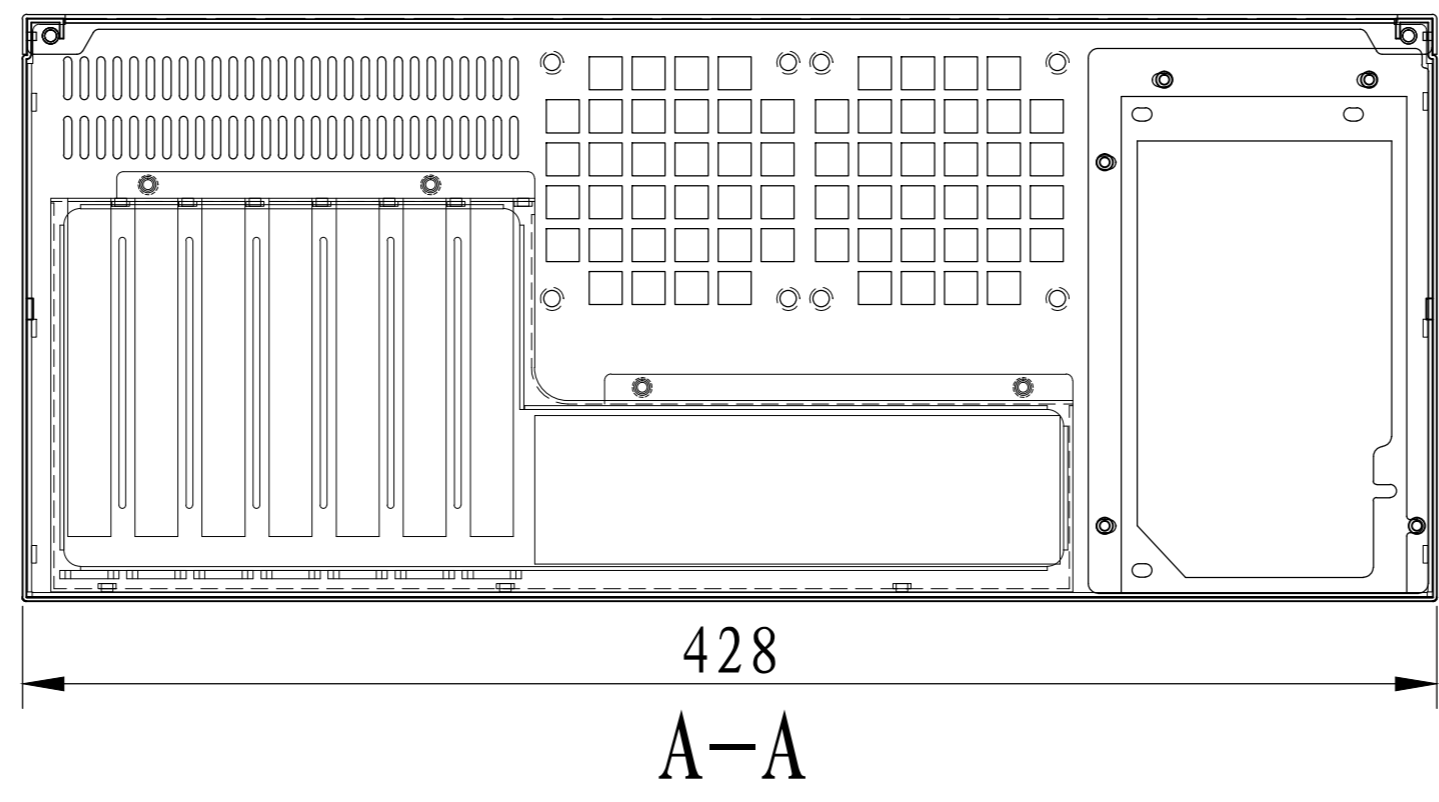
Secure outer rail to L bracket with crews and nuts.



Repeat previous steps to secure sliding rails on both sides.



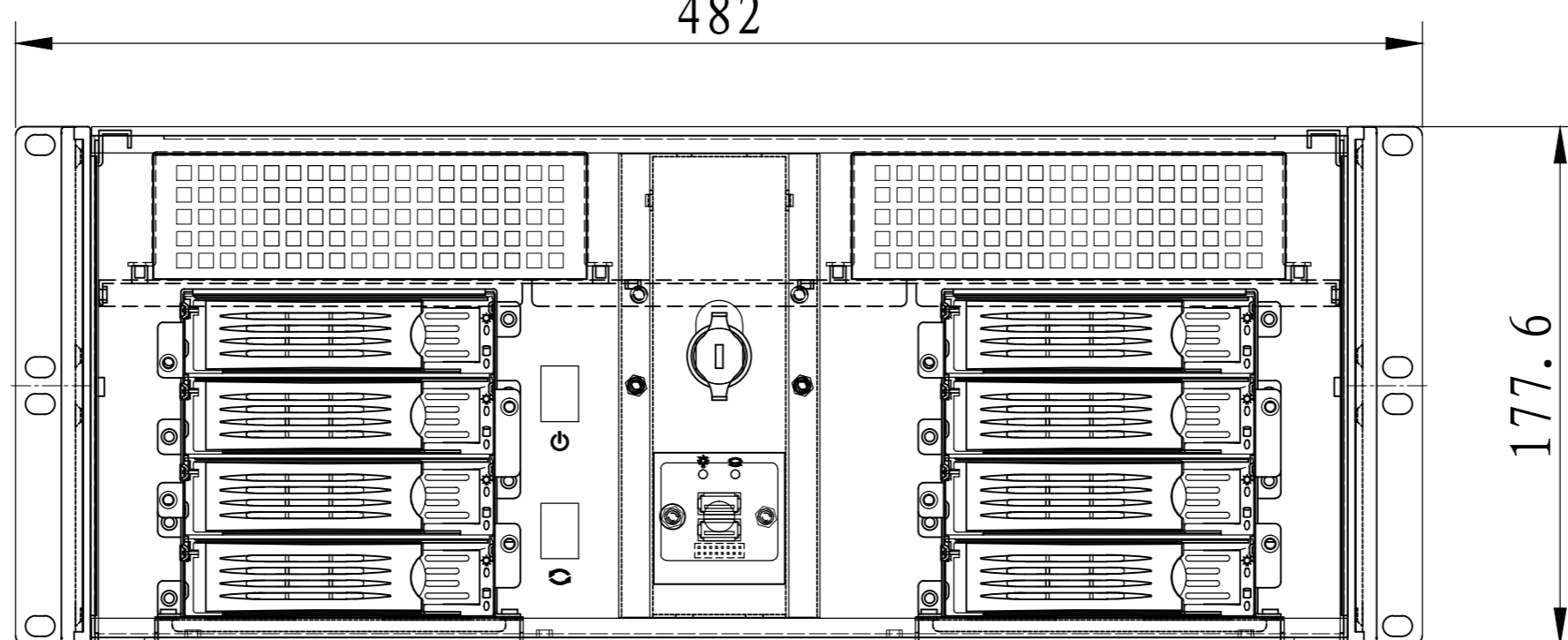
Reattach inner rail back to center rail.



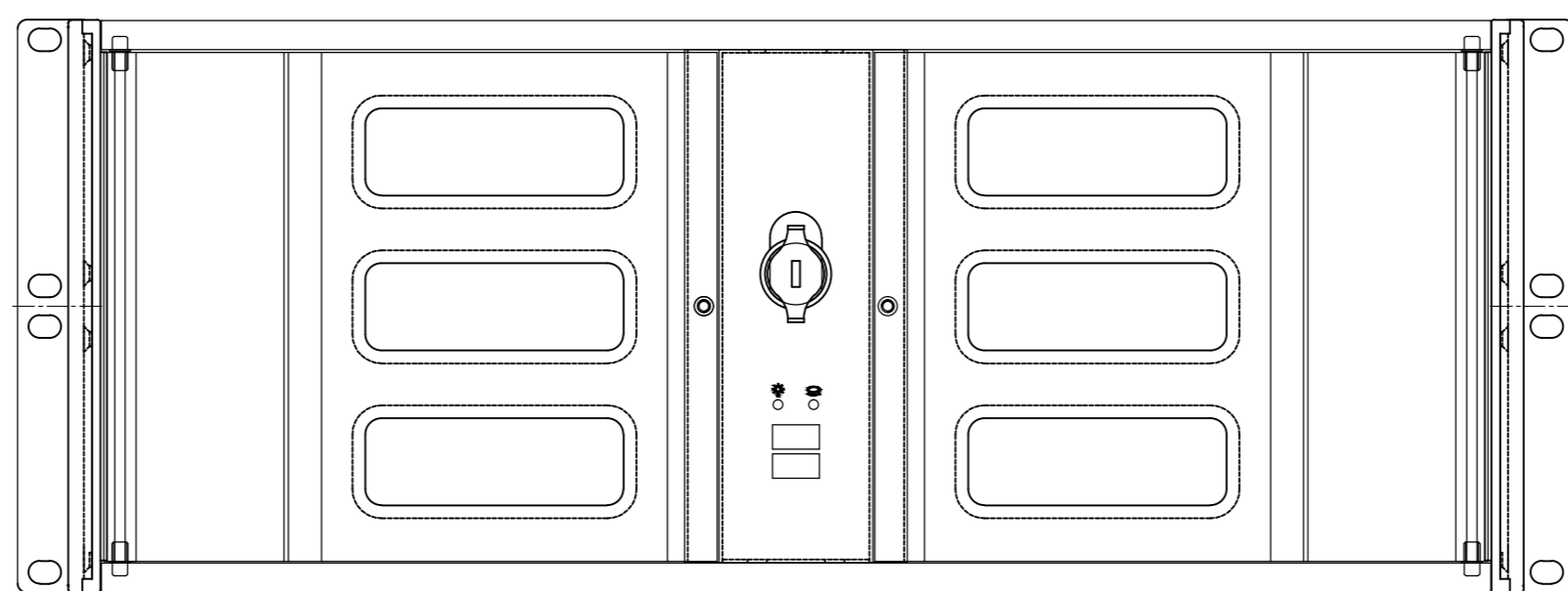
Autodesk

Autodesk

P
482



正面去门



P-P