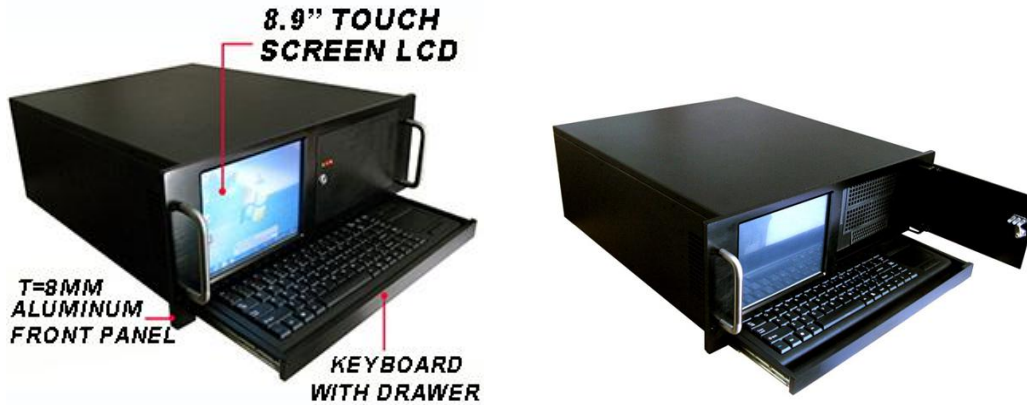


LCD WorkStation Series

KI-N475LTKB

4U-LCD Workstations Chassis

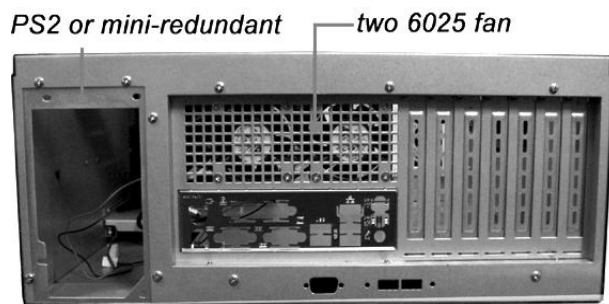
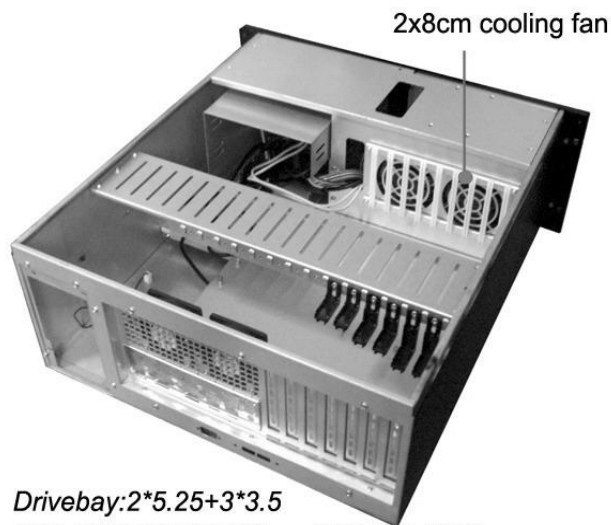


Introduction

This 4U Rackmount LCD Workstation has 7 slots for EATX & 14 slots for SBC. The chassis features 2 x 5.25" & 3x 3.5"(fix). It has a touch LCD with backlight that lasts for 50000 hrs. It is equipped with 2 x 8cm fans with a black chassis that is 19.7" in depth, and it supports full integrated slide-out keyboard and trackball.

Features and Benefits

- ▶ 8.9" TFT LCD screen
- ▶ 1x5.25" space+2x 3.5"(fix)+2x3.5"(screwless tray) space
- ▶ PS2 or PS2 size mini-redundant PSU
- ▶ Power and HDD LED



Specification

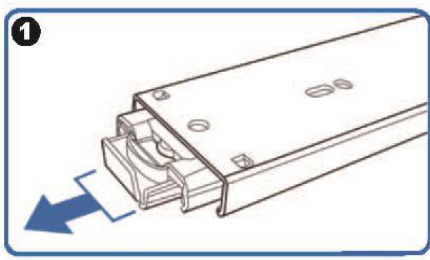
Dimension (W*H*D)	19" x 7" x 19.7" / 482 x 177 x 500(mm)
Material Construction	Heavy-duty & Rugged Steel 1.2mm SECC +Aluminum front panel T=8mm
M/B Size	12"*13"
Expansion	7 slots rear side full height or 14slot
Control & Indicator	1*Power switch +1* Reset switch 1 x LED (power) +2 x LED (HDD)

	2*2.0 USB
Cooling Fans	2x8cm Fan+2x6cm Fan
DriveBay	2x5.25" space+2x 3.5"(fix)+1x3.5"(external)
LCD	8.9" TFT TOUCH SCREEN LCD
Keyboard	Full integrated slide-out keyboard and trackball
Power Supply	Standard PS-2 ATX or PS-2 size Mini-Redundant Power supply 300w~550w
Sliding rail	26" ball bearing sliding rail (option)
Color	Black / Beige
Operation Temperature	Up to 50C (122°F)
Operation Humidity (Non-condensing)	Up to 90%
Packing Measurement CBF / CBM	3.2 / 0.1
Packing N.W / G.W	14.5.0KGS /16.5KGS

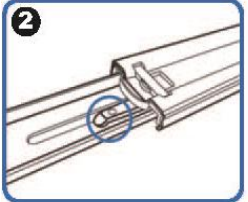
Option: 20" Three-Sections Heavy-Duty Solid Ball-Bearing Sliding Rails

Model: RB20

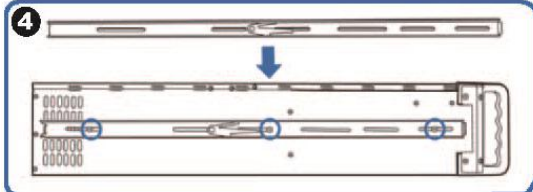
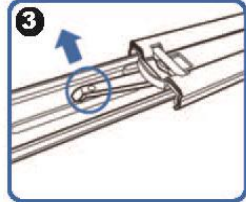
Features: Universal Design to match almost all chassis on market, Heavy-Duty Slide Ball Bearing
 Built-in stop-latch, lock chassis in extended position for easy access ,
 Simply pressing on the plastic levers on each side and slide your case back into the cabinet
 Warranty: 1 Year



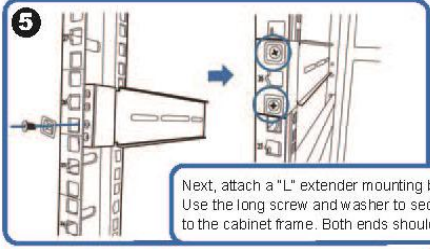
(Pull the center slide all the way out until it reaches the end)



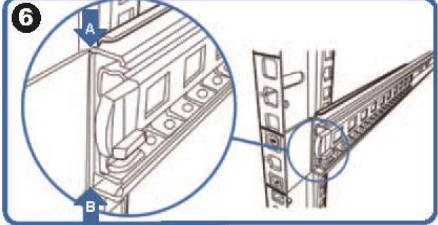
You will see a locking clip at the end point of the center slide. Push it down and unlock the center slide.



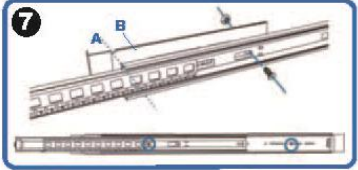
Now put the center slide right next to the rackmount chassis. You should be able to find screw holes on both sides of chassis. Holes are used for mounting the center slide. Later the center slide will be used for attaching the sliding rail.



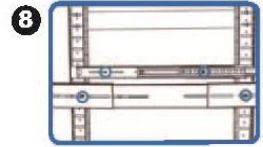
Next, attach a "L" extender mounting bracket on to the cabinet. Use the long screw and washer to secure the "L" extender bracket on to the cabinet frame. Both ends should have the extender bracket.



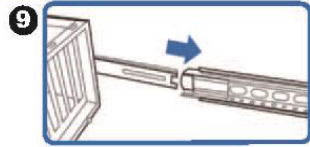
Align front outer rail to the indent of L bracket between Point A & B.



Secure outer rail to L bracket with screws and nuts.



Repeat previous steps to secure sliding rails on both sides.



Reattach inner rail back to center rail.

